

AacerCush I

FLOATING SYSTEMS

Resilience, low cost and ease of installation make AacerCush I a widely utilized athletic floor. AacerCush I is chosen for racquetball and squash courts, stage floors, gymnasiums and multipurpose rooms.



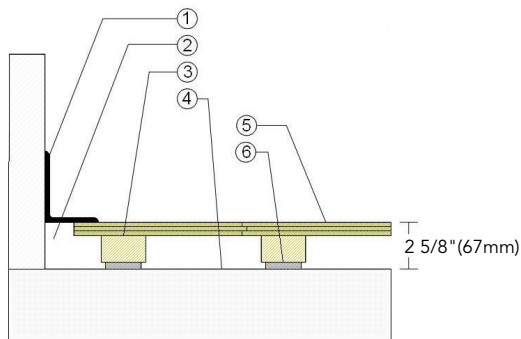
INFINITY
Wood Floors





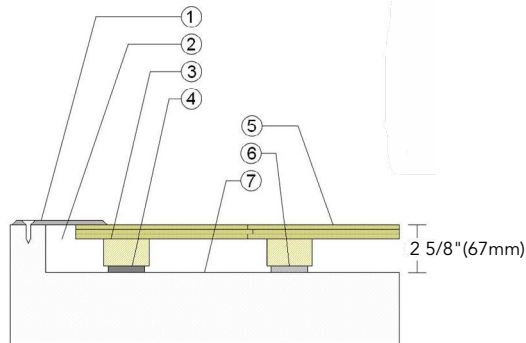
1. Infinity MFMA Maple
2. Nom. 2" x 3" (38mm x 64mm) AacerCush Sleeper
3. 3/8" (10mm) AacerCush Pad

WALL BASE



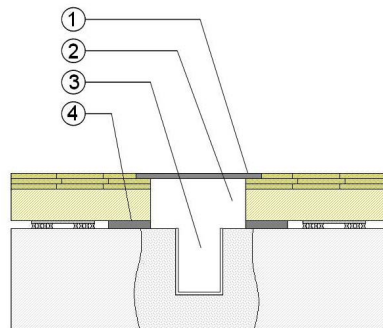
1. 3" x 4" (76mm x 101mm) Vent Cove Base
2. 1 1/2" (38mm) Min. Expansion Space
3. 1-1/2" x 2-1/2" (38mm x 64mm) Sleeper
4. Vapor Retarder
5. 25/32" (20mm) MFMA Maple Flooring
6. 3/8" (10mm) AacerCush Pad

THRESHOLD



1. 1/4" (6mm) Aluminum Threshold
2. 1 1/2" (38mm) Min. Expansion Space
3. 1-1/2" x 2-1/2" (38mm x 64mm) Sleeper
4. Solid Blocking at Doorway
5. 25/32" (20mm) MFMA Maple Flooring
6. 3/8" (10mm) AacerCush Pad
7. Vapor Retarder

EQUIPMENT



1. Floor Plate
2. 1 1/2" (38mm) Expansion Space Required at all Insert s& Electrical Penetrations
3. Concrete Floor Penetration
4. Solid Blocking at Insert

Certified



Green Status and LEED Contributors



- FSC® Certified Maple - MR
- FSC® Certified Subfloor Components - MR
- Environmental Quality - EQ
- Regional Materials - MR

Resilience

3/8" (10mm) AacerCush Pad
*Other pad options available

Slab Depression

- 25/32" (20mm) Flooring
- 2 5/8" (67mm)

Optional AacerCush Systems

AacerCush I+
AacerCush II
Anchored AacerCush I
Anchored AacerCush I+

Subfloor Construction

Sleeper

System Type

Floating

Testing Laboratory Partners



It is the policy of Infinity Wood Floors to continuously improve its line of products. Therefore, Infinity Wood Floors reserves the right to change, modify or discontinue systems, specifications and accessories of all products at any time without notice or obligation to purchaser.